

# socialwork

## NYU Silver Goes Global

As New York University evolves into a premier global network university, the NYU Silver School of Social Work has quickly grown beyond New York City. Over the last few years, the School has launched a new research institute at NYU's Shanghai campus, expanded its global learning programs and international conference offerings, and seen an uptick in international students. But before NYU became a global university, NYU Silver had been a leader in its international work.

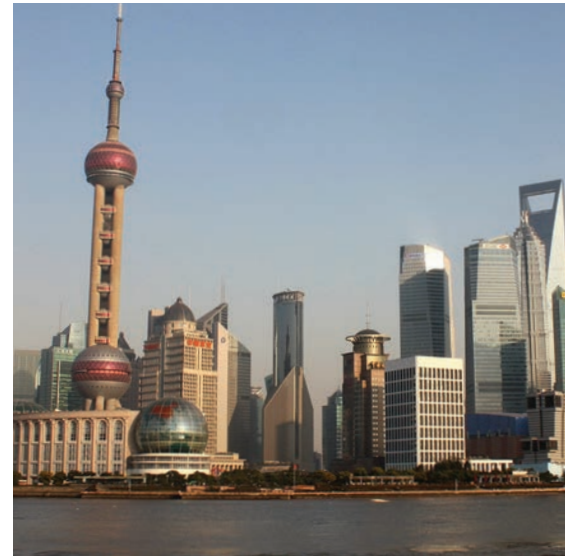
The School has been a long-time sponsor of Information for Practice (IP), the free, online resource for social workers. Professor **Gary Holden**—who maintains and edits the site—created the first version of IP in 1993 as a list of resources on a floppy disk to hand out at conferences. Over the past 20 years the resource has evolved into a unique international resource for social care/social welfare/social work professionals that focuses on aggregating news and new scholarship for professional practice. Visit IP at [ifp.nyu.edu](http://ifp.nyu.edu).

Each summer since 1990, Associate Professor Yuhwa Eva Lu has been hosting staff of the Taiwan Fund for Children and Families, who travel to the United States for a three-week program to study child welfare policies, programs, and direct services. Since 1999, she has been hosting them at NYU Silver, where they hear from local experts and visit government and nonprofit organizations around the city.

### NYU-ECNU Joint Institute for Social Development Launched

The year 2013 marked the founding of the NYU-ECNU Joint Institute for Social Development (ISD) at NYU Shanghai, a collaborative research effort between NYU Shanghai and East China Normal University (ECNU). NYU Silver's Professor **Wen-Jui Han**, an expert in social policies and child development, and ECNU Professor Jun Wen, are co-directors. ISD's mission: provide a platform that allows scholars from both universities and around the world to collaborate on research and learn from each other. This venture, in fact, marks China's first formal, institutionalized social work collaboration.

CONTINUED INSIDE >>

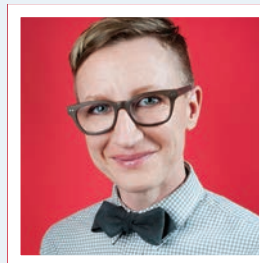


Shanghai — The location of NYU's newest campus.

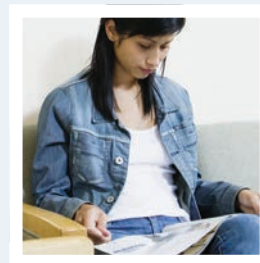
in this issue:



**NYU Silver Endowed Scholarships**



**Helping Homeless LGBT Youth**



**Study Aims to Improve Contraceptive Counseling**

**Supporting Others to Reach Their Potential**

**Faculty Awards, Honors, and Publications**

# table of contents:

NYU Silver Goes Global	1
A Letter from the Dean	3
Donor Voices	4
Helping Homeless LGBT Youth	5
Study Aims to Improve Contraceptive Counseling	6
Supporting Others to Reach Their Potential	7
Class Notes	7
New Faculty Members Join NYU Silver	8
Faculty Awards and Honors	8
Faculty Publications	9
Silver School Honor Roll	10
Upcoming Events	Back Cover

Written by Elizabeth Jenkins,  
Associate Director of Communications  
with Ann Webre, MSW '69 and  
Penelope Yates, MSW '16

Designed by Kate Hogan, Graphic Designer

For comments or suggestions about the  
**Newsletter**, contact Elizabeth Jenkins  
E-mail: [elizabeth.jenkins@nyu.edu](mailto:elizabeth.jenkins@nyu.edu)

[www.socialwork.nyu.edu](http://www.socialwork.nyu.edu)

## Calling All Social Work Alumni!

Would you like to share your story  
with us? Do you have news or updates  
about your professional activities? We  
want to hear from you!

Send updates to  
[ssw.alumni@nyu.edu](mailto:ssw.alumni@nyu.edu).

 Find us on **Facebook**

 Connect on **LinkedIn**

CONTINUED >>

## NYU Silver Goes Global

In considering the social needs of its population in the context of the country's rapid urbanization, the Chinese government has set three research priorities: immigration and migration; children, adolescents, and families; and aging. China has two national longitudinal datasets on its aging population, but no data on children.

With the help of two ECNU doctoral students, Xupeng Mao and Yuerong Liu, Han envisions that ISD can start the data collection on children, learning the status of their physical and mental health, education, and family and living circumstances. By this spring, ISD will finish its first data collection point with a pilot study conducted in Shanghai. "It's an ambitious job that will generate work for years to come," explained Han. "With this knowledge, the government will be able to design policies and programs to address children's actual needs."

### Conference Explores Obstacles and Opportunities for Global Health and Well-Being

Bringing together 240 attendees, including 130 experts from around the world, NYU Silver convened a three-day conference titled "Global Well-Being and Health: The Social Work Response," June 17 - 19, 2013. The conference discussion included the importance of social determinants and social justice in shaping global health efforts, as well as the Micro-Consignment Model, which seeks to empower individuals and promote collaboration within the community by delivering start-up capital to local communities.

### McSilver Institute to Launch New Journal

NYU Silver's McSilver Institute for Poverty Policy and Research, in cooperation with Springer Publishing, plans to launch the new journal *Global Social Welfare: Research, Policy and Practice* in 2014. The journal will apply a global perspective practice to the well-being and systemic challenges of individuals, groups, families, and communities while maintaining an interdisciplinary focus on global social development and social policy and practice.

### Global Learning Opportunities, Exchanges Grow

In 2012-2013, Rimini, Italy, joined the locations for global learning opportunities that already included: Buenos Aires; Costa Rica; Dominican Republic; Paris; The Philippines; and Washington, DC. The number of participants was up as well, from 85 in 2011-12 to 132 last academic year.

In summer 2013, nine students from Universidad Popular Autonoma del Estado de Puebla (UPAEP) in Puebla, Mexico, came to NYU Silver to participate in a 10-day leadership program. The year before, Silver School students traveled to the UPAEP. This exchange program is part of a Mexican-American effort between the **Center for Latino Adolescent and Family Health** at NYU Silver and UPAEP, which will conduct research examining social work and public health issues associated with migration between the United States and Mexico.

### Alumna Realizes Global Social Work Dream

As soon as she graduated with an MSW from NYU Silver, Cayce Pack, BS '12, MSW '13, traveled to Nabulus, a West Bank city with the Palestinian Territory's largest refugee population, to work with Tomorrow's Youth Organization (TYO). An American nonprofit, TYO focuses on the financial, educational, and social

needs of local women and children. As women's empowerment coordinator, Pack oversees and administers all programming for female participants, many of whom live in refugee camps. She felt especially drawn to these women because few are able to break into the labor force despite their relatively high levels of education. Pack hopes to support her clients in acquiring the tools necessary for achieving their goals.



# A Letter from the Dean

## Dear alumni and friends:

Since the summer issue of the *Newsletter*, we have been hard at work developing new programs and initiatives. In Shanghai, we are developing research projects focusing on children in China and establishing a branch of our MSW program and a dual degree doctoral program with our partner, East China Normal University. We are also planning for a new clinical doctoral program here in New York. Stay tuned for more news later this year on this exciting venture.

In October, we hosted a celebratory School luncheon on NYU Alumni Day, where we recognized some of our outstanding alumni with the annual NYU Silver Alumni Day Awards. Our keynote speaker, Reverend Calvin Butts, III, offered an inspiring talk on the purposes of higher education and the importance of truly knowing one's students, which leads to more effective education. Claudia Oberweger Frank, MSW '88, received the Making the Difference Award, and Associate Professor Theresa Aiello, PhD '93, received the Distinguished Service to the School Award. The Distinguished Alumni Awards went to Phil Coltoff, MSW '64, the Katherine W. and Howard Aibel Visiting Professor and Executive-in-Residence, and Jama Shelton, MSW '04. Jama, a champion of homeless LGBT youth, is profiled in this issue of the *Newsletter*.

Also in this issue, we highlight a few of our generous financial supporters. We thank all of our 2012-13 donors with the annual Honor Roll. In addition, we feature four of our donors who established endowed scholarships, from which 41 students received funding to help pay tuition last year.

The NYU Silver faculty are leaders in building knowledge for social work intervention of the future. This issue follows research by Professor Jim Jaccard, who is leading a team working to improve contraceptive counseling. If you are interested in reading more about other faculty research projects, as well as catching up on School's accomplishments in 2012-13, I invite you to read the School's annual report online at [www.socialwork.nyu.edu/about-silver/publications](http://www.socialwork.nyu.edu/about-silver/publications).



Lynn Videka

*Lynn Videka*

### Lynn Videka

Dean and Professor

# momentum

*A Scholarship Campaign for NYU*

## THE GOAL:

**Raise \$1 billion by 2017 exclusively for scholarships.**

We can only meet this goal with **your participation.**

NYU Silver stands ready to educate the leaders of the future. Your generosity will enable us to train the most talented students to make a difference through a degree in social work.

## MAKE YOUR GIFT

### Online:

[www.nyu.edu/giving/silver](http://www.nyu.edu/giving/silver)

### On the phone:

Call **Karen Wright**,  
Director of Development,  
(212) 998-6924

### By mail:

Make your check payable to  
NYU Silver and mail it to:  
NYU Silver  
25 West 4th Street, Suite 336  
New York, NY 10012

# Donor Voices

In 2012-13, the NYU Silver School of Social Work fundraising efforts garnered \$2.61 million, thanks to generous donors. The School has 19 active endowed scholarship funds, which provided \$226,500 to 41 students. For endowed funds, gifts are invested and preserved in perpetuity, with the annual interest used for scholarships. Silver School scholarships are competitive, ensuring funding goes to students most in need with high academic standing. The *Newsletter* asked four donors to describe what motivated them to form endowed scholarships.

## Inserra Scholarship

Lindsey Inserra, BS '11, told her parents she wanted to pass on to others the chance for an excellent, inspiring social work education, like the one she had. So, she asked them to establish a scholarship fund. Her mother, Bonnie, said, "We agreed, and we dedicated the scholarship to Lindsey herself. She is our hero."

At age 11, Lindsey was diagnosed with a rare form of Type 1 Diabetes. At age 14, she received a life saving treatment thanks to her mother. Their joint determination helped Lindsey to master her health limitations and the time lost from formal education. Now, Lindsey is dedicated to bringing a message of health and wellness to the communities and employees served by her family's business, Inserra Supermarkets. With seven registered dietitians in 22 of their ShopRite stores, Lindsey is committed to bringing complimentary services to those who would otherwise not have access to such health and wellness resources.



## Constance McCatherin-Silver Fellowship

"I am lucky enough to have the great privilege of being able to make a difference," said Constance Silver, BS '78, MSW '79. Part of Martin and Constance Silver's historic \$50 million gift to the Silver School in 2007 created the Constance McCatherin-Silver Fellowship, providing financial aid to a diverse group of students.

Because social workers in New York serve many ethnic minorities, Silver said, "It was obvious to me that the School needed more ethnicity in our ranks. Our gift established the Silver Fellowship providing financial aid to very smart MSW students who wouldn't be able to attend social work school without this help."

The Silvers make other contributions, including to other units of NYU and continuing support to the McSilver Institute for Poverty Policy and Research. Affirmed Silver, "It seems to me that it is the right thing to do."



## Eleanore Z. Korman Scholarship

Starting in 1967, through teaching at the School and working in various administrative roles, Eleanore Korman got to know NYU Silver faculty and students. Korman spent 32 years at the School, serving as acting dean from 1994 to 1996. She strongly believes in the quality of the Silver School education and the impact of social workers.

"When I was acting dean, I wanted to start a scholarship fund by making a one-time contribution to the School," she said. "The faculty rallied to the idea, held a fundraising gala, and the Eleanore Z. Korman Scholarship Fund was launched. Faculty, alumni, students, and friends contributed." Four students have been supported by Korman's generosity.



## 291 Foundation Scholarship

"My personal philosophy of giving is to choose programs, schools, or organizations in which I have a strong belief, that have touched me in some way, or that are in accordance with my ethics," said Nancy Wender, MSW '96, a psychotherapist in private practice in New York City. Growing up in a philanthropic family, she was taught the importance of giving without the expectation of receiving anything in return. Wender established the 291 Foundation to support initiatives she believes in, such as organizations that help others and deserving students at NYU.

"The Silver School's values mirror my own, and it gives me great pleasure to support people via scholarships, and especially to encourage future leaders in the palliative and end-of-life care areas," she said. "I was so fortunate to have received a world-class education at NYU Silver. I want others, challenged by the mounting cost of education, to receive the same education afforded to me."



# Helping Homeless LGBT Youth

## Jama Shelton, MSW '04

For Jama Shelton, the decision to pursue social work arose organically through an unlikely source: theater. From 1997 to 2002, she lived in Texas and worked with LGBT youth aged 14-22 on community-based art projects where the teens did writing exercises and came up with accompanying visual imagery.

"Inevitably what would happen is a young person would end up disclosing some traumatic experience that had happened," said Shelton, the director of the True Colors Fund's Forty to None Project. "I did not feel like I had the skillset to responsibly handle that information." Confident in her background working within a community setting, she wanted a graduate program with a strong clinical foundation. The NYU Silver School of Social Work fit the bill.

Shelton always planned to work with LGBT youth, but had not decided on a specific area of focus. Her first-year placement at the Brooklyn Women's Shelter helped her hone in on her specialty. Shelton's own experiences with homelessness—her family kicked her out of their home after coming out to them post college—did not prepare her for the harsh realities of New York's homeless system. "I had no idea—I am from a small town. I didn't even know about shelters. It blew my mind."

In the last year of her MSW program, her student loan funding ran out. Faced with the possibility of leaving school, Shelton reached out to everyone she knew in New York City and learned of an opening at the Ali Forney Center. She was hired in the spring of 2004, and graduated that May. She remained at the center for nine years, helping guide the creation and growth of the country's most expansive housing program for homeless LGBT youth.

As her work at the Ali Forney Center shifted into more macro levels of social work, she became increasingly aware of, and frustrated by, the "macro-level barriers that young people face." She explained, "I went in to social work wanting to focus on individual clinical work, but I noticed the connections between macro systems' impact on the individual, so I decided to go back for my PhD."

Shelton pursued her PhD in social welfare at the CUNY Graduate Center at Hunter College. Her dissertation used qualitative research to examine the experiences of transgender and non-gender conforming youth who had experienced homelessness—a population that, at the time, was very rarely discussed. Shelton incorporated elements from her arts background into the study, asking her subjects to visually map their experiences through drawing.



Jama Shelton

"What I was really looking for were the places where their journey—in terms of gender identity and expression—intersected with their journey in terms of housing and homelessness, and how the two related," she explained. Shelton received her doctorate last May. The study, yet to be published, has already received two awards, and Shelton is working on several articles and planning to write a book on her findings. She sees concrete, broad-based policy implications from the work.

Shelton currently works at the True Colors Fund's Forty to None Project, the only national organization exclusively focused on the issue of LGBT youth homelessness. Through awareness-building programs and initiatives focusing on public education, advocacy, empowerment, capacity building, and inclusion, the Forty to None Project seeks to help bring an end to LGBT youth homelessness. Shelton also works as an adjunct faculty member at NYU Silver and Hunter College's Silberman School of Social Work.

Reflecting on her career, Shelton noted the importance of possessing an awareness of micro- and macro-levels of social work. She said, "As social workers, it's important that we push each other, and push ourselves, to see that we're not working in a vacuum. We're connected to a larger movement."

**The Society for Social Work and Research honored Shelton with a 2014 Outstanding Social Work Doctoral Dissertation Award Honorable Mention for her dissertation, "There's No Place Like Home? The Experiences of Unstably Housed Transgender and Gender Nonconforming Young People."**

# Study Aims to Improve Contraceptive Counseling

“Almost half of all pregnancies in the United States are unintended,” said Professor **James Jaccard**.

That’s more than 8,000 per day, on average. The economic cost amounts to billions annually, and the emotional and psychological costs are incalculable. Half of unintended pregnancies involve women who use contraception but do so inaccurately or inconsistently.

Jaccard, co-director of NYU Silver’s Center for Latino Adolescent and Family Health (CLAFH), is leading a project with a team of NYU researchers (including Professor **Vincent Guilamo-Ramos**, co-director of CLAFH, and Nicole Levitz) and researchers at Planned Parenthood Federation of America to improve contraceptive counseling to reduce the number of unintended pregnancies. The research is funded by the Office of Population Affairs of the Department of Health and Human Services and focuses on health clinics under the auspices of Title X legislation designed to support reproductive health for economically disadvantaged women. Title X clinics currently serve more than 5 million clients annually.

The counseling protocol being tested was developed from an extensive two-year review of scientific literature on contraceptive behavior among young adults, which was published in 2010 by Jaccard in the book *Unlocking the Contraceptive Conundrum*. This work was followed by extensive interviews with clients of Title X clinics, contraceptive counselors, managers of health care centers, training directors at clinics, medical staff, and organizational leaders heading national efforts to improve reproductive health.

With over a dozen methods of birth control to choose from and each of these methods varying on a dozen or more dimensions (such as their effectiveness, cost, protection against STDs, side effects, and difficulty in obtaining), well over 150 different pieces of information must be taken into account when choosing a method. Explained Jaccard, “Much of the information is quite technical and needs to be integrated into a broad range of lifestyle considerations.”

The team’s protocol is unique in that it uses fundamental principles of decision-making and decision-counseling derived from social science and social work research to simplify the process in ways that ensure that the choice a client makes is an informed one that “fits” his or her lifestyle.

“We use novel visual aids that are structured in ways that people naturally process information and that encourage systematic comparisons among methods on dimensions that are important to clients,” said Jaccard. The protocol also encourages counselors and clients to consider more than just the



medical facts about methods, and clients consider the broader context of their social relationships and reproductive goals.

Choosing an effective method is only part of the puzzle to reducing unintended pregnancies. “It also is important to ensure people use contraception accurately and consistently,” said Jaccard. He explained that scientists make distinctions between the perfect use effectiveness of a method and the typical use effectiveness of that method. For example, if condoms are used correctly every time someone has sex, the perfect use effectiveness rate is about 98 percent. The way most people typically use condoms, however, the typical use effectiveness rate is about 82 percent.

Said Jaccard, “It is important that we close the gap between perfect use and typical use effectiveness rates. Our counseling protocol helps to do just that.”

The research is in the midst of a two-year scientific study with 1,500 women in 10 different clinics nationwide to evaluate the effectiveness of the approach. The team is optimistic that its evidence-based counseling approach, grounded in the empirical science of counseling, will significantly impact reproductive health and reduce future unintended pregnancies.

In addition to applying theories of decision making to solve social problems such as unintended pregnancies, Jaccard is teaching a new master’s/doctoral-level course this spring on adolescent decision making. Jaccard provides overviews of major theories of adolescent decision making and teaches students how to use the theories to design effective prevention interventions to reduce adolescent problem behaviors. The course includes analyses of rational and irrational decision processes used by adolescents, thoughtful and impulsive decision making, and the biological bases of decision making during adolescent development.

# Supporting Others to Reach Their Potential

## Steven W. Chung, BS '14

In January 2013, Steven W. Chung transferred to the NYU Silver School of Social Work from Bergen Community College (BCC) in Paramus, New Jersey. A few months later, he donated \$2,000 and established the Steven W. Chung Award for an undergraduate social work transfer student with financial need. Chung's gratitude towards people who helped him has motivated him to lend a hand to others.

Back in October 2010, Chung returned to his hometown of Queens, New York, homeless and unemployed after two years at a Christian high school in Missouri. His parents had sent him there at age 16 because he had joined a street gang and dropped out of his Queens high school.

Upon his return to Queens, he searched for guidance for several months eventually connecting with a good Samaritan who provided Chung with food, clothes, work, housing, and friendship. "I appreciated and was even inspired by his good will and consideration."

Chung applied to several local colleges, but received rejection letters. Finally, a Queens college informed him that his Missouri high school was not accredited. Chung was undaunted by the news. Living in New Jersey with his grandfather following his grandmother's death,



Steven Chung

a local youth pastor recommended he begin his studies at BCC for his GED, which he received in April 2011. That fall, he started his associate's degree education at BCC. He explained, "I decided to major in social work to help others as I had been helped."

Speaking about BCC, he said, "I met many students who were highly qualified to transfer into top-tier universities, yet, the only struggle they faced was financial." In response, he established two scholarships at BCC, as well as the one at NYU Silver, with money saved from working. Today he manages the BCC Honors Alumni Network to continue raising scholarship funds.

"I donated to financially assist the recipients and to ultimately inspire other students to engage in philanthropic work," he explained. "Everyone has potential."

## Class Notes

**Noah Clyman, MSW '07**, is the first clinical social worker in New York to be certified as a trainer consultant by the Academy of Cognitive Therapy. He is proud to join the ranks of the 12 psychiatrists and psychologists in New York who hold this prestigious title. ACT certified consultants are individuals who possess the educational, practice, and leadership skills to serve as a mentor, consultant, or supervisor for other developing cognitive behavioral therapists.

**Steve Crohn, MSW '93**, a social worker, artist, and freelance editor for *Fodor's Travel*, died on August 23, 2013. His paintings, mostly abstract works inspired by landscapes, were exhibited in New York and throughout the United States. He became famous as a gay man immune to AIDS and for offering himself as a subject in research leading to the development of a drug arresting the spread of HIV in people with the virus.

**Richard I. Feinberg, MSW '87**, has written a book on narcissistic personality disorder titled *Narcissus in Treatment: The Journey from Fate to Psychological Freedom* (Karnac Books, 2013). This book is available in paperback and as an e-book on Amazon.com.

**Lisa Halotek, MSW '98**, received her doctorate in psychoanalysis from the Los Angeles Institute and Society for Psychoanalytic Studies (LAISPS) in May. She is now a member of the LAISPS faculty teaching infant observation in their training program. In August she presented her paper "Twisted Bits and Scattered Pieces: Primitive Work when

the Container is a Sieve" at the 48th IPA Conference in Prague. She has a private practice in Los Angeles and is a supervisor for the Valley Community Clinic.

**Steven Kuchuck, MSW '88**, published an edited collection *Clinical Implications of the Psychoanalyst's Life Experience: When the Personal Becomes Professional* (Routledge Relational Perspectives Book Series, November 2013). He has a private practice in psychotherapy and psychoanalysis in Manhattan, co-edits the journal *Psychoanalytic Perspectives*, and is associate editor of the *Relational Perspectives Book* series from Routledge. Steven teaches at several psychoanalytic institutes and lectures in the United States and abroad.

**Roopa Raman, MSW '13**, is working as a consultant with Sangath, a mental health NGO in Goa, India, on an NIMH-funded project called South Asia Hub for Advocacy Research and Education on Mental Health (SHARE). Currently in the project's pilot phase, they are adapting a CBT intervention developed to treat maternal depression in Goa.

Since her retirement from the State Department and Arlington Public Schools, **Rita Reilly Siebenaler, MSW '66**, has been a volunteer counselor at the Arlington Free Clinic and has been instrumental in launching counseling services at the Culmore Free Clinic. Both are located in suburbs of Washington, DC.

Send class notes to [ssw.alumni@nyu.edu](mailto:ssw.alumni@nyu.edu).

# New Faculty Members Join NYU Silver

The Silver School of Social Work welcomed three new faculty members this academic year. These individuals have strong research and scholarship backgrounds in mental health services, mixed methods research, adolescent depression, and chronic illness and pain.



**Stacey Barrenger**, assistant professor and Mc-Silver faculty fellow, examines the intersection between the mental health system and other systems of care: criminal justice, homelessness, substance use, and poverty. Her current research examines the production of risk for recidivism among men with mental illnesses leaving prison.

She is also interested in implementation research that considers the community or structural factors that can impact the effectiveness of empirically supported treatments in high-risk environments. She received an individual National Research Service Award pre-doctoral training grant from the National Institute of Mental Health (NIMH) in support of this research. Barrenger's teaching areas include social determinants of health, human behavior in the social environment, qualitative research methods, and policy.



**Anne Dempsey** has accepted a one-year appointment as clinical instructor. She coordinates the School's 32-month program for working professionals. Dempsey has been a faculty advisor and classroom instructor at NYU Silver since 2005. She teaches the Seminar in Field Instruction and handles field placements in a variety of areas for

the Office of Field Learning and Community Partnerships. Her interests include psychoanalytic psychotherapy, the ways in which physical health affects emotional well-being, and social work education in the field. She has worked with children, adolescents, and their families in child welfare; with adults in mental health settings; and in hospitals, with a focus on chronic illness, chronic pain, and physical disability.



Associate Professor **Michael Lindsey** joined NYU Silver in January 2014. He is a child and adolescent mental health services researcher, and is particularly interested in the prohibitive factors that lead to unmet mental health need among vulnerable youth with serious psychiatric illnesses, including depression. He has received research support from

NIMH to examine the social network influences on perceptual and actual barriers to mental health care among African American adolescent males with depression. Lindsey's current research, funded by NIMH and the Annie E. Casey Foundation, involves the development and test of a treatment engagement intervention that promotes access to and use of mental health services among depressed adolescents in school- and community-based treatment. His teaching areas include clinical social work practice and research methods.

# Faculty Awards and Honors

Professor **Deborah Padgett** was named director of the doctoral program at the NYU Global Institute of Public Health. In addition, Padgett was invited by the Institute of Medicine to serve on an advisory committee to evaluate the quality and capacity of Department of Veterans Affairs' mental health services provided to US veterans of the Iraq and Afghanistan wars.

The Society for Social Work and Research (SSWR) named two NYU Silver faculty members—**James Martin** and **Deborah Padgett**—to its inaugural class of SSWR fellows. SSWR established this fellowship to honor and recognize members for their individual accomplishments, leadership, and contribution to SSWR as a scientific society.

The American Public Health Association presented Professor **Wen-Jui Han** and Associate Professor **Tazuko Shibusawa** with the 2013 Nobuo Maeda International Research Award for their paper "Trajectory of Physical Health, Cognitive Status, and Psychological Well-Being among Chinese Elderly."

The Society for Social Work and Research has honored Professor **Wen-Jui Han** with the 2014 Excellence in Research Award for her article titled "Bilingualism and Academic Achievement," published in *Child Development*.

NYU Silver presented Alumni Day Awards to two of its esteemed faculty members. Associate Professor **Theresa Aiello** was honored with the Distinguished Service to the School Award in recognition of her outstanding teaching and dedication to students as director of the Post-Master's Certificate in Advanced Clinical Practice and co-director of the Advanced Post-Master's Certificate in Child and Family Treatment. **Phil Coltoff**, the Katherine W. and Howard Aibel Visiting Professor and Executive-in-Residence, received the Distinguished Alumnus Award for his exemplary 25-year leadership of the Children's Aid Society and for his advocacy for children and families in need.

NYU Silver faculty have been awarded a grant of more than \$3 million by the National Institute of Mental Health to conduct a large, randomized controlled trial of Person-Centered Care Planning, a recovery-oriented practice designed to engage people actively in their mental health services. The study will be conducted at 14 mental health agencies in Connecticut and Delaware by Associate Professor **Victoria Stanhope**, who is the principal investigator; Professor **Deborah Padgett**; and researchers at Yale University and the University of Pennsylvania.

The **McSilver Institute for Poverty Policy and Research** has received four new grants to support its work: two awards from the New York State Health Foundation—one for \$24,500 and one for \$325,700; a \$120,000 grant from the US Veterans Administration; and a \$769,700 grant from the National Institute of Mental Health.

The School's **Zelda Foster Studies Program in Palliative and End-of-Life Care** has received three new grants: one for \$35,000 from The Y.C. Ho/Helen and Michael Chiang Foundation; and two \$25,000 grants from the from the Lucius N. Littauer Foundation.

Professor **Vincent Guilamo-Ramos** has received two one-year grants to support his research at the Center for Latino Adolescent and Family Health (CLAFH). The MAC AIDS Fund has awarded funding to support the delivery of an effective, family-based HIV prevention program for youth in the Dominican Republic. The Clinical and Translational Science Institute at the NYU School of Medicine has awarded a grant for a project promoting the engagement and retention of mental health services in the Bronx for black male and Latino youth.



# Faculty Publications

**Festinger, T.** & Baker, A. (2013). The quality of evaluations of foster parent training: An empirical review. *Children and Youth Services Review, 35*, 2147-2153.

Ruiz, Y., **Guilamo-Ramos, V.**, Leavitt, S., McCarthy, K., & Muñoz-Laboy, M. (in press). Migration and HIV transmission: The case of Mexicans in Puebla and New York City. *American Journal of Public Health*.

Munoz-Laboy, M., Severson, N., Perry, A., & **Guilamo-Ramos, V.** (in press). Differential impact of types of social support in the mental health of formerly incarcerated Latino men. *American Journal of Men's Health*.

Munoz-Laboy, M., Worthington, N., Perry, A., **Guilamo-Ramos, V.**, Cabassa, L., Lee, J., & Severson, N. (2013). Socio-environmental risks for untreated depression among formerly incarcerated Latino men. *Journal of Immigrant Minority Health*. E pub ahead of print.

Munoz-Laboy, M., Garcia, J., Perry, A., **Guilamo-Ramos, V.**, Lee, J., & Lotz, K. (2013). Social network factors associated with sexually transmitted infections among formerly incarcerated Latino men. *International Journal of Sexual Health, 25*(2), 163-168.

Lee, R., Zhai, F., **Han, W-J.**, Brooks-Gunn, J., & Waldfogel, J. (in press). Head Start and children's nutrition, weight, and health care receipt. *Early Childhood Research Quarterly*.

Li, J., Johnson, S. E., **Han, W-J.**, Kendall, G., Strazdins, L., Dockery, A., & Andrews, S. (in press). Parent's shift work and children's wellbeing: A critical review of the literature. *Journal of Primary Prevention*.

Fox, L., **Han, W-J.**, Ruhm, C., & Waldfogel, J. (2013). Time for children: Trends in the employment of parents, 1967-2009. *Demography, 50*(1), 25-49.

**Hawkins, R.**, **Jaccard, J.**, & Needle, E. (2013). Nonacademic factors associated with dropping out of high school: Adolescent problem behaviors. *Journal of the Society for Social Work and Research, 4*, 58-75.

Eyberg, S., Boggs, S., & **Jaccard, J.** (in press). Does maintenance treatment matter? *Journal of Abnormal Child Psychology*.

Bechor, M., Pettit, J., Silverman, W., Bar-Haim, Y., Abend, R., Pine, D., Vaseyd, M., & **Jaccard, J.** (in press). Attention bias modification treatment for children with anxiety disorders who do not respond to cognitive behavioral therapy: A case series. *Journal of Anxiety Disorders*.

Hillhouse, J., Turrissi, R., & **Jaccard, J.** (2013). Evaluating the accuracy of self-reports of sun exposure and sun protection behavior over a summer. *Prevention Science, 13*, 519-531.

Carter, R., Silverman, W., & **Jaccard, J.** (2013). Race and perceived pubertal transition effects on girls' depressive symptoms and delinquent behaviors. *Journal of Youth and Adolescence, 42*, 1155-1168.

Bagner, D. M., Pettit, J. W., Lewinsohn, P. M., Seeley, J. R., & **Jaccard, J.** (2013). A transactional model of parental depressive symptoms and child internalizing and externalizing behavior problems. *Journal of Clinical Child and Adolescent Psychology, 42*, 78-90.

Alessi, E. J., Meyer, I. H., **Martin, J. I.**, & Gyamerah, A. (2013). Prejudice-related events and traumatic stress among heterosexuals and lesbians, gay men and bisexuals. *Journal of Aggression, Maltreatment, and Trauma, 22*, 510-526.

Alessi, E. J., Meyer, I. H., & **Martin, J. I.** (2013). PTSD and sexual orientation: An examination of criterion A1 and non-criterion A1 events. *Psychological Trauma: Theory, Research, Practice, and Policy, 5*, 149-157.

Roh, S., Lee, Y. S., Lee, J. H., & **Martin, J. I.** (2013). Typology of religiosity/spirituality in relation to perceived health, depression, and life satisfaction among older Korean immigrants. *Aging and Mental Health*. DOI:10.1080/13607863.2013.848837

Sarabia, S., & **Martin, J. I.** (2013). Aging effects on substance use among midlife women: The moderating influence of race/ethnicity and substance. *Journal of Social Work Practice in the Addictions, 13*, 417-435.

**McKay, M.**, Alicea, S., Elwyn, L., McClain, Z., Parker, G., Small, L., & Mellins, C. (in press). Addressing the need for theory-driven programs capable of impacting urban children's health, mental health, and prevention needs: CHAMP and CHAMP+, evidence-informed, family-based interventions to address HIV risk and care. *Journal of Clinical Child and Adolescent Psychology*.

**McKay, M.**, Small, L., Jackson, J., & Gopalan, G. (in press). Using research to inform practice with youth evidencing co-morbid or complex difficulties. *Research on Social Work Practice*.

Bhana, A., Mellins, C., Petersen, I., Alicea, S., Myeza, N., Holst, H., Abrams, E., Johns, S., Chhagan, M., Nestadt, D., & **McKay, M.** (in press). The VUKA Family Program: Piloting a family-based psychosocial intervention to promote health and mental health among HIV+ early adolescents in South Africa. *AIDS Care*.

Hoagwood, K., Olin, S., Horwitz, S., **McKay, M.**, Cleek, A., Gleacher, A., Lewandowski, R., Nadeem, E., Acri, M., Chor, K., Kuppinger, A., Burton, G., Weiss, D., Frank, S., Finnerty, M., Bradbury, D., Woodlock, K., & Hogan, M. (in press). Scaling up evidence-based practices for children and families in New York State: Towards evidence-based policies on implementation for state mental health systems. *Journal of Clinical Child and Adolescent Psychology*.

Stevens, T., Schwartz-McGuire, M., Rotko, L., Fuss, A., & **McKay, M.** (in press). A learning collaborative supporting the implementation of an evidence-informed program, the 4Rs and 2S for children with conduct difficulties and their families. *Journal of Evidence-Based Social Work*.

**Merritt, D. H.** & **Festinger, T.** (2013). Post-adoption service need and access: Differences between international, kinship and non-kinship foster care. *Children and Youth Services Review, 35*(12), 1913-1922.

**Merritt, D. H.** (2013). Review of the book *Protecting Children in the Age of Outrage: A New Perspective on Child Protective Services Reform*, by R. Jagannathan and M. J. Camasso. *The Journal of Children and Poverty, 19*(2), 131-132.

Narendorf, S., **Munson, M. R.**, & Levingston, F. (2013). Managing moods and parenting: Perspectives of former system youth who struggle with emotional challenges. *Children and Youth Services Review, 35*(12), 1979-1987.

**Munson, M. R.**, Lee, B. R., Miller, D., Cole, A., & Nedelcu, C. (2013). Emerging adulthood among former system youth: The ideal versus the real. *Children and Youth Services Review, 35*, 923-929.

**Padgett, D. K.**, Smith, B. T., Derejko, K., Henwood, B. F., & Tiderington, E. (2013). A picture is worth...? Using individual photo-elicitation to enhance interviews with vulnerable populations. *Qualitative Health Research, 23*, 1435-1444.

Henwood, B. F., Cabassa, L. J., Craig, C., & **Padgett, D. K.** (online first, October 22, 2013). Permanent supportive housing: Addressing homelessness and health disparities? *American Journal of Public Health*.

**Shibusawa, T.**, Iwano, S., Kaizu, K., & Kawamuro, Y. (in press). Self-reported mistreatment among Japanese elders receiving respite care. *Journal of Maltreatment and Aggression*.

**Shibusawa, T.** (2013). Elder mistreatment. *Oxford Bibliographies in Social Work*.

**Straussner, S. L. A.** (2013). The DSM-5 diagnostic criteria: What's new? *Journal of Social Work Practice in the Addictions, 13*(4), 448-453.

**Straussner, S. L. A.** (2013). *Clinical Work with Substance-Abusing Clients* (3rd ed.). New York, NY: The Guilford Press.

**Stanhope, V.**, **Barrenger, S. L.**, Salzer, M. S., & Marcus, S. C. (2013). Examining the relationship between choice, therapeutic alliance and outcomes in mental health services. *Journal of Personalized Medicine, 3*(3), 191-202.

**Tosone, C.**, McTighe, J., & Bauwens, J. (in press). Shared traumatic stress among social workers in the aftermath of Hurricane Katrina. *The British Journal of Social Work*.

Bauwens, J., & **Tosone, C.** (in press). Posttraumatic growth following Hurricane Katrina: The influence of clinicians' trauma histories, primary and secondary traumatic stress. *Traumatology*.

**Videka, L.**, Gopalan, G., and Bauta, B. (in press). Child abuse and neglect. In Alex Gitterman (ed.), *Handbook of Social Work Practice With Vulnerable Populations, 3rd Edition*. New York: Columbia University Press.

**Wakefield, J. C.** (in press). Psychological justice: Distributive justice and psychiatric treatment of the non-disordered. In M. Reisch (Ed.), *Handbook of Social Justice*. New York, NY: Routledge.

**Wakefield, J. C.** (in press). Wittgenstein's nightmare: Why the RDoC grid needs a conceptual dimension. *World Psychiatry*.

First, M. B. & **Wakefield, J. C.** (in press). Diagnostic criteria as dysfunction indicators: Bridging the chasm between the definition of mental disorder and diagnostic criteria for specific disorders. *Canadian Journal of Psychiatry*.

**Wakefield, J. C.** & First, M. B. (in press). Diagnostic validity and the definition of mental disorder: A program for conceptually advancing psychiatry. *Canadian Journal of Psychiatry*.

**Wakefield, J. C.** & Schmitz, M. F. (in press). Predictive validation of single-episode uncomplicated depression as a benign subtype of unipolar major depression. *Acta Psychiatrica Scandinavica*. (Published online: DOI: 10.1111/acps.12184).

**Wakefield, J. C.** (in press). DSM-5 Changes and controversies: The headline news, part 3. *Private Practice: NASW Specialty Practice Sections Newsletter*.

**Wakefield, J. C.** (2013). DSM-5 Changes and controversies: The headline news, part 2. *Private Practice: NASW Specialty Practice Sections Newsletter, fall 2013*, 2-6.

**Wakefield, J. C.** & Schmitz, M. F. (2013). Uncomplicated depression, suicide attempt, and the DSM-5 bereavement-exclusion debate: An empirical evaluation. *Research on Social Work Practice*. (Published online: DOI: 10.1177/1049731513495092).

**Wakefield, J. C.** & First, M. B. (2013). The importance and limits of harm in identifying mental disorder. *Canadian Journal of Psychiatry, 58*(11), 618-621.

**Wakefield, J. C.** (2013). Addiction, the concept of disorder, and pathways to harm: Comment on Levy. *Frontiers in Addictive Disorders & Behavioral Dyscontrol, 4*(34).

**Wakefield, J. C.** (2013). DSM-5 and clinical social work: Mental disorder and psychological justice as goals of clinical intervention. *Clinical Social Work Journal, 41*(2), 131-138.

**Wakefield, J. C.** (2013). DSM-5: An overview of changes and controversies. *Clinical Social Work Journal, 41*(2), 139-154.

# Thank You Silver School Honor Roll

This honor roll acknowledges NYU Silver's loyal givers and recognizes contributions made by generous donors in the 2012-13 fiscal year. Your investment helps make it possible for Silver School students to earn a quality education that allows them to make a positive difference in the world. Thank you for supporting NYU Silver, and we hope we can continue to count on your gifts in 2013-14.

## Dean's Circle Benefactors: \$5,000 Plus

Anonymous (2)  
291 Foundation  
Howard J. Aibel  
The Arnold F Baggins Foundation Inc.  
William B. and Jane E. Bram Foundation  
The Y.C. Ho/Helen & Michael Chiang Foundation  
Council on Social Work Education, Inc.  
Nancy H. Edelman  
The Edlow Family Fund Inc.  
Mary Edlow, PhD  
Five Together Foundation  
German Society of the City of New York  
Lori B. Greifer-Kaufman  
Elizabeth Hemmerdinger  
Bonnie A. Inserra  
Lawrence R. Inserra  
Lindsey M. Inserra  
Jewish Foundation for Education of Women  
Henry & Elaine Kaufman Foundation Inc.  
Doris C. Kempner  
Kathleen T. Kennedy  
LCU Foundation  
Joseph & Juanita Leff Charitable Trust  
Juanita Behrstock Leff  
Lisa W. & James J. Zenni Jr. Foundation  
Ernesto Loperena  
M.A.C. AIDS Fund  
Nancy L. Nebeker  
Gideon & Claudia Oberweger Family Foundation  
Claudia M. Oberweger Frank  
Robin Hood Foundation  
Gloria Rose and Dr. Burton Rose  
The Fan Fox & Leslie R. Samuels Foundation Inc.  
Elinor A. Seevak  
Judith L. Selbst Kamins  
Jayne Silberman  
Connie and Martin Silver  
Jacob Toll  
The New York Community Trust  
Lynn Videka  
Nancy L. Wender

## Dean's Circle Members: \$1,000-\$4,999

Wendy Bond  
Calvin R. Carver, Jr.  
Carver/Delaney Families Foundation Inc.  
Steven Chung

Anne DeLaney  
Matt Dinusson  
Rachel Foster Kodsi  
Hal Foster  
Arlene R. Gellman, PhD  
Susan B. Gerbino  
Cecile Strauss Hanft  
Sharon L. Hawkins  
Isaac Dinah Guzy Foundation Inc.  
Marlene P. Kaufman  
Judith Kellner  
Daniel W. Lampert  
Barbara J. Landau  
Jon Landau  
Lois Jaffin Levine  
John Bertram McDonald  
Tazuko Shibusawa  
Kathryn Smerling  
Lynn Wild Spector  
Terina Pei Yin Tan  
Jacqueline M. Taylor  
UJA Federation of New York  
Helena Kornwasser Usdan  
Sarah and John Waterbury

## Sponsors: \$500-\$999

Darren P. Arthur, LMSW  
Sally D. Clement Revocable Trust  
Kira B. Copperman  
Paula Y. Fendall  
Nancy C. Gennet  
Andrew M. Greenberg, Esq.  
Gary Holden  
Wendy Anne Kallman-Frank  
Carol M. Kanarek  
Miriam Klevan  
Douglas J. Schindewolf  
Lynn I. Stoller  
Ferne Traeger  
U.S. Cellular  
Silkaly Moskowicz Wolchok

## Associates: \$100-\$499

Beth A. Adler  
Kimberly C. Agresta  
Theresa Aiello  
Alison Aldrich  
Fatema Monowara Ali  
Scott Samuel Altabet  
Theresa Ann Altilio  
Jeane W. Anastas  
Valerie Tate Angel  
Rudolph M. Antonio  
Eugene Aronowitz  
Samuel R. Aymer, PhD  
Sharon B. Bacharach  
Mary Lou Baiocco  
Edward M. Ballen  
Christina C. Banks  
Marilyn J. Baron  
Meredith A. Barton  
Lee Basher

Bellick Foundation  
Sheryl D. Bellick  
May Benatar, PhD  
Robert S. Berger, PhD  
Joan Berzoff  
Alison Stanley Birnbaum  
Anthony L. Blackburn  
Nancy E. Borders  
Bridgewood Fieldwater Foundation  
Jennifer Abcug Brody  
Yvette Brown  
David M. Browning  
Mr. and Mrs. Kevin J. Burke  
Mark S. Callahan  
Lois A. Carey  
Sandra E. Carr  
Alma J. Carten-Morris  
Victoria R. Caruncho  
Jane Monell Chase, PhD  
Siu-Wah Chau  
Cathee E. Chichester  
Gayle W. Clachko  
Roger L. Clinton  
Susan J. Conceicao  
LuAnn J. Conforti  
Tyrone C. Copeland  
Penelope Damaskos, PhD, LCSW, OSW-C  
Panzy H. DeHart  
Robyn G. Dietz  
Jessica A. Dorzek  
Ying Duan  
Damon Eaves  
William L. Edelman  
Susan B. Egert  
Laurel M. Eskra  
Maria-Teresa Feliciano  
Jacquelyn Emch Felix  
Ernest L. Fernandez  
Trudy Festinger  
Madeline Jane Feuerstein-Genende  
Lauren M. Frac  
Mary L. Francis  
Aquila Frederick  
Geraldine M. French  
Harriette Friedlander  
Carole Friedler  
Allison L. Frost  
Martha A. Gabriel  
Felicía Gardner  
Morgan K. Gebhardt  
Sheri B. Gold  
William S. Goldberg  
Nancy Golob-Schlessel  
Michela A. Griffo  
Diane Grodney  
Ellen H. Grosovsky  
Brenda P. Haas  
Julie Ann Hall  
Wen-Jui Han  
James L. Hatcher  
Roberta A. Henrich  
Alonzo R. Hines  
Patricia A. Hopkins-Glatthaar  
Marlo D. Hyman  
Ronald Jackson  
Rhonda Jaffee  
Elizabeth J. Jenkins  
Mary Ann Jones

Shirley Joan Jones  
Jeanette Y. Katz  
Ian D. Kemp  
Rugena King  
Donna M. Klipper, MSW  
Takako Kono  
David G. Korn  
Susan L. Korn  
David L. Krueger  
Jennifer Langham, PhD  
Judith K. Lauterstein  
Nora-Ann Lawrence  
Beth M. Lee  
Eunju Lee  
Howard D. Leifman, PhD  
David Lemonick and Mrs. Mary Tuttle  
Lenox Hill Neighborhood House  
Christopher J. Leonard  
George G. Lewert  
Emily Loft-Wagshal  
Peter D. Lowitt, MD  
Yuhwa Eva Lu  
Lorna A. MacLeod  
Lois A. Macri  
Johanna E. Maiorano  
Delores Malloy  
Karen L. Manasse  
Megan M. Marino  
James I. Martin  
Cynthia S. May  
Isalean McClary  
Phyllis D. McClean  
Kelly McDonald  
Ellen Avvento-McGuinness  
Bruce M. McGuire  
Gwendolyn H. McKenzie  
Linda A. Messina  
Glenn D. Meuche  
Eileen Minnefor  
Diane Mirabito  
Angela Misthal  
Mr. and Mrs. Lawrence A. Molnar  
Moody's Foundation  
Peggy A. Morton  
Jerry A. Moyer  
Muskingum County Community Foundation  
Michele Muto  
Yumi K. Nam  
Cheryl A. Nastasio  
Susan A. Nayowith, PhD  
Duy D. Nguyen  
Evelyn Nieves  
Stacey Ochs  
Olatunde Olusesi, PhD  
Courtney O'Mealley  
Trudy Owett, ACSW  
Deborah K. Padgett  
Jeffery J. Palladino  
David H. Perlman  
Patricia Perlman  
Therese D. Piasecki  
Brannan M. Piper  
Marilyn J. Piven

Maria Di Pompo  
Carolyn F. Porcher  
Fumi Matsuki Raith  
Andrea Reiter  
Genie & Donald Rice Charitable Trust  
Alice Higgins Rice  
Donald S. Rice, Esq.  
Susan Regan Rogal  
Christine Rollet  
Dina Rosenfeld  
Vincent T. Ruisi  
Rwanda Education Asst. Proj. Inc.  
Mr. and Mrs. Jonathan Sacks  
Vincent N. Schiraldi  
Abby Schwartz  
Samuel H. Schwimmer  
Diane W. Seessel  
Constance M. Seligman  
Suna Elizabeth Senman  
Barbara Sicherman  
Elionora W. Silbersack  
Janet M. Silverstein  
Millicent Singer  
Suellen Snyder  
Amy K. Sommer  
Richard M. Sommer, MD  
Robert W. Sommo, Jr.  
I. Barry Sorkin  
David A. Sotnick  
Linda D. Sotnick  
Sandy Speier  
Deon Spellen-Lowitt  
Victoria Stanhope  
Shulamith L. A. Straussner  
Ilene Posner Sumberg  
Celestine Syles  
Kristy A. Szemetylo  
Ethel Gubkin Taft  
Doris S. Taylor  
David L. Teicher  
James Tela  
Lorraine Tempel, PhD  
Hildonia M. Thomas  
Carol A. Tosone  
Tribeca Downtown Associates LLC  
Stephen Barry Ungar  
Gray Joseph Velasquez  
Catherine Vu  
Andrew C. Wagenseller  
Catherine Ward Rankins  
Rita P. Warner  
Sue S. Watson  
Kate Wechsler  
Annie R. Weinblatt  
Monica Weiss  
Wells Fargo Foundation  
Jayne M. Wesler  
Mary R. Windt  
Deborah F. Wisoff  
Jeffrey H. Wisoff, MD  
Eileen Wolkstein, PhD  
William J. Wood  
Mr. and Mrs. Zvi Gellis  
Russell L. Zygmunt

The Silver School gratefully acknowledges the continuing support of **Connie** and **Martin Silver**.

## Friends: Up to \$99

Yasmin R. Adam  
Amy J. Adler  
Melissa L. Affronti  
Judith Akullian, PhD  
Lyla L. Al-Husseini  
Kimberly Allred  
Ella Almog  
Nicole A. Altbaum  
Katia E. Amaya  
Mr. and Mrs. Steven E. Arnold  
Robin H. Aronow  
Deborah Graham Athans  
Irene Auerbach  
Lorna K. Bailey-Boyd  
Olga Rosa Ballon  
Nikita Banks  
Camille M. Banks-Lee  
Alathia A. Barnett  
Nanette Fleischer Barr  
Beth L. Barry  
Daniel Thomas Basso  
Mark S. Baum  
Besa H. Bauta, MSW,  
LMSW, MPH  
Stephen M. Bayer  
William Berde  
Ina R. Berg  
Olivia W. Bergeron  
Joan G. Berkowitz  
Katheryn Allen Berlandi  
Marjorie E. Berman  
Marika C. Bernstein  
Ann Durney Berntsen  
Victor V. Bianco  
Douglas J. Binder  
Rana E. Binder  
Carolyn A. Blake  
Kimberly K. Blaschke  
Nicole J. Blass  
Barbara P. Bleemer  
Leichena M. Bodie  
Carol S. Bogen  
Johanna L. Bos, LMSW, CASAC  
Gail P. Bradbury  
Matthew W. Braman  
Stella Bravo  
Sandra E. Brinkman  
Raymond M. Brown  
Ursula M. Brown  
David W. Brubaker  
Michael C. Bruno  
Jacqueline Bryan  
Shoshana M. Bulow  
Lashawn Butler  
Joann Hajjar Byrnes  
Anne C. Cahalan  
Janet L. Campbell  
Susan Caputo  
Orla Cashman, PhD  
Bobby N. Casiano  
Jeanette K. Caurant  
Harvey Chambers  
Kathleen Cheslok  
Meryl J. Chodosh-Weiss  
Philip Coltoff  
Sharon Lobell Comiteau  
Janet H. Conciatore  
Harold L. Cost  
Michelle W. Dacalos  
Christel Breuer D'Agostino  
Deborah G. Dakar Athans  
Danielle F. Daks  
Sheila Davidson  
Jane Davis  
Cynthia de Ben  
Debra A. DeCarlo  
Tara Devineni  
Adela Y. Diaz  
Estephany Diaz

Barbara L. Dicker  
Stephanie L. DiCristoforo  
Dolores M. Dillon  
Dawn M. DiNardo-Lippi  
Paula Mahoney Dodge  
Sheila K. Doherty  
Penelope J. Dow  
Helen A. Dowler  
Heather Duncan  
Anita Dwyer  
Joseph Eden  
Vera Eden  
Lauraine Effress  
Alice A. Einhorn  
Beverly G. Eisenoff  
Raymond Stuart Ennis  
Rebecca E. Ervey  
Margot F. Escott  
Reuven D. Escott  
Phyllis Ettinger  
Erika Falk  
David M. Feldstein  
Alejandrina Felizdeledesma  
Frank J. Ferrara  
Patricia R. Flynn  
Carol Reidel Fontinell  
Veronica Foldes Frame  
Berton Klein Frank  
Mathylde K. Frontus  
Marlene E. Furtick  
Rosemary Galletti  
Rhoda Finkelstein  
Maritza A. Garza-Hogue  
Linda Prizzi Gilman  
Ellen G. Gittleman  
Barbara J. Golby  
Sara Goldberger  
Sheryl Lynn Goldfarb  
Christine M. Goldstein  
Nancy Tishman Gonchar, DSW  
Lauren M. Goodkind  
Sharon Beskin Goodman  
Jacqueline B. Graber  
Kathleen Grace  
Charles Gray  
Carol C. Greenberg  
Renee B. Gross  
Caroline M. Grossmann, PhD  
Angela D. Guida  
Sylvia M. Gunn  
Ariella Bat-Tzion Gutin  
Susan E. Haberman-Cooke  
Tana Hacken  
Leah E. Halka  
Jo R. Hariton  
Rev. Arthur W. Harris  
Victoria Haywood  
Janis G. Heller  
Giannil Hidalgo  
Maryann E. Higgins  
Gretchel Y. Hinton-Temba  
Ruth B. Hirsch  
Jane E. Holzman  
Ilona A. Hress  
Sandra D. Hudson  
Nancy McMaster Hughes  
Ella J. Hughley  
Josephine A. Hyde  
Annemarie Infosino  
James Jaccard and  
Liliana Goldin  
Ann N. Jackson  
Charles Jennings  
Katelin Jennings  
Allen F. Johnson  
Gloria A. Johnson  
Mugambi J. Jouet-Nkinyangi  
Mr. and Mrs. David Joyandeh  
Angela J. Jupp  
Arthur J. Kalen  
Lauren E. Kalogridis

Rachel P. Kamat  
Joseph H. Kames  
Jesse E. Kasowitz, Esq.  
Elinor Leah Kass  
Lisa Kaufmann Millman  
Kathleen P. Keane  
Dora F. Kearsley  
Karina A. Kedzierska  
Mariama C. Keita  
Lauren N. Kelley  
Jordana Kenny  
Susan A. Kiely  
Robert R. Kirk  
Rosemary Kirk  
Sharon H. Kivell  
Lesia Koger  
Nicholas S. Koufacos  
Betty M. Krakeur  
Nancy J. Krell  
Estelle M. Krumenaker  
Wendy E. Kugelmann  
Olga Kuharenko  
Dorothy P. Kurzweil  
Fran Lacas  
Glen Ladner  
Emily F. Lambert  
Sarah A. Lamport  
Gerald Landsberg  
Danielle S. Langston  
Stephanie LaPuzz  
Theow K. Lau  
Ellen F. Laudone  
Stephanie R. Lax  
Irene Lee  
Naomi Leiseroff  
Carolyn A. Levine  
Fred Levitan  
Barbara G. Levy  
Qiuyuan Liu  
James J. Lynch  
Mary Stewart Manasse  
Brooke K. Mann  
Anlee Marcus  
Patricia L. Margolin  
Donna L. Marshall  
Jane Martin  
Leah Martin  
James J. Mc Creath  
Catherine A. McBride  
Lauren D. McCaman  
Charlotte A. McCullagh  
Joanne McLean  
Patricia McVeigh-O'Dell  
Jed W. Metzger  
Colleen A. Mielke  
Naomi L. Miller  
Patricia Malone Miller  
Robin L. Miller  
Valerie Jean Miller  
Vivian I. Miller-Nusbaum  
Leslie N. Mitchell-Simmonds  
Radmila Moacanin  
Allan S. Mohl  
Elizabeth A. Morgan  
Marian Morgan  
Linda L. Morley  
Helen N. Morris  
Irena Motyka  
Rosemary T. Moynihan  
Ann L. Muder  
Phyllis Muken  
Daniel A. Nelson  
Asuncion Neri-Candelaria  
Patricia Nevins  
Dorene Ng  
Maryellen Noonan  
Judith G. Novick  
Nancy F. Nunziata  
John D. Oddo  
Myrha Ohayon  
James M. Oher

Darrin S. Oliver  
Sylvia T. Ortiz  
Carolina Nanet Ortiz-Rivera  
James R. Pagett  
Dawn M. Papacena  
Louise Parente  
Melanie R. Pearce  
Eric R. Pearson  
Carrie M. Pettler  
Phuong Phamthihoai  
Barbara B. Phillips  
Wendy P. Pierson  
Maria Pineiro  
Katherine R. Pinto  
Lois S. Polivnick  
Suzanne G. Pred-Bass  
Jean Neuenhaus Preis  
William R. Preston  
Judith L. Price  
Sarah E. Raab  
Richard M. Rabin  
Sharon Rachelson  
Jennifer Raiten  
Roopa S. Raman  
Anne D. Rauscher  
Sharon Rebell  
Alicia K. Reinhardt  
Karen Horowitz Reis  
Mary Restivo  
Elizabeth Rincon  
Yvonne Rivera  
Maida B. Roberts  
Adele Rocyte  
Judy Rogers  
Beverly A. Rohlehr  
Joan L. Rosenbaum  
Carol L. Rosenberg  
Sheila N. Rowe Hall  
Helen L. Rozanski  
Kristin N. Rubino  
Fern Slovin Rudorfer  
Kate Rutherford  
Tanya N. Sadlowski  
Sharon J. Sakai  
Zachary P. Sandler  
Martha M. Santiago  
Veronica Saravia  
Bruce E. Saul  
Claudia G. Saul  
Gilbert A. Scarlett  
Odile A. Schalit  
Nancy D. Schandler  
Patrick A. Schelle  
Winston M. Schepps  
Karin E. Schmidt  
Lorin Schneider  
Louis Schneider  
Frederick F. Schock  
Gloria E. Schreiner  
Doris A. Schwartz  
Cynthia M. Schwartzberg  
Roslyn Scott  
Rita B. Seclow, MSW  
Anthony Serio  
Frances A. Shaver  
Sara L. Sherwood  
Judith P. Siegel  
James J. Silvestri  
Sisters of Charity  
Joan L. Smith, PhD  
Karrie A. Smith  
Linda Gayle Snyder  
Claire Sommers  
Christine D. Speck  
Elaine Ravel Spiro  
Karin Spitzer  
Leslie H. Spivak  
Tammy L. St. Clair  
Treaasa A. Stanley  
Sarah F. Stapleton  
Laura Stemmler

Ellen D. Stern  
Corinne Sternlieb  
Ryann L. Stewart  
Corey S. Stillwell  
Judith T. Stone  
Shirley Strassenburgh  
Torey S. Stronell  
Leman Strong  
Ariel L. Sugarman-Orens  
Jane Sugarman-Wiznia  
Jill M. Sukenick, PhD  
Luther Summers  
Alan S. Sunshine  
David Surlie  
Andrea Swazey  
Lita M. Talbot  
Ida Tam  
Ronald H. Tanner  
Rachelle M. Tapfar  
Mary M. Taylor  
Mr. and Mrs. William  
Thomas Taylor  
Gitanjali R. Thadhani  
Helle Thorning, PhD  
Lily M. Tom  
Talia A. Trachtman  
Susie P. Traverso  
Roman-David Trojanowski  
Catherine Turano, MSW, LSW  
Ida G. Usher  
Dominick W. Usher  
Elizabeth Valerio  
Elizabeth L. Vandepaer  
Lisa A. Veglia  
Carol Ann M. Verdi  
Ariel N. Wagner  
Lynne Beers Walters  
Jin Wang  
Elinor R. Weidenfeld  
Susan D. Weil  
Jenna D. Weinberg  
Tracy Wells  
Christopher M. Wesolowski  
Alicia White  
Danielle White  
Kristy B. White  
Joanne M. Whittaker  
Olivia Wilks-Duerr  
Krister Willgren  
Crystal Williams  
Kathleen D. Williams  
Michelle Williams  
Regina Wiltshire  
Wendy Winograd  
Heidi Wiste  
Tony D. Woo  
Karen Wright  
Jianming H. Wu  
Mara Lejfer Yacobi  
Mengyu Yao  
Zarina Yevdayeva  
Denise E. Young  
Laura R. Young  
Claire M. Zang  
Richard L. Zaslow  
Elaine T. Ziegler  
Andrew W. Zimmerman

Disclaimer:  
*If you were an NYU Silver contributor between September 1, 2012, and August 31, 2013, and find your name missing, misspelled, or listed under the wrong heading, please accept our apologies. Help us correct our records by contacting Karen Wright at (212) 998-6924 or karen.wright@nyu.edu.*

New York University  
**Silver School of Social Work**  
Ehrenkranz Center  
1 Washington Square North  
New York, NY 10003-6654

Nonprofit Org.  
U.S. Postage  
Paid  
New York  
University

## Upcoming Events

### Professional Advancement in Leadership Roles Fridays at Silver on the Square Seminar Series

March 28, 2014

Location: Silver School, 1 Washington Square North

### NYU Silver Alumni Book Club

Book: *My Antonia* by Willa Cather

April 1, 2014

### Immigration

Fridays at Silver on the Square Seminar Series

April 25, 2014

Location: Silver School, 1 Washington Square North

### NYU Silver Alumni Book Club

Book: *Baseball as a Road to God* by John Sexton

May 13, 2014

### Core Principles of Trauma-Informed Care: The Essentials

May 15, 2014

Location: NYU Kimmel Center for University Life

### Mindfulness

Fridays at Silver on the Square Seminar Series

June 13, 2014

Location: Silver School, 1 Washington Square North

Look for more information at [www.socialwork.nyu.edu](http://www.socialwork.nyu.edu)

as the event dates approach.



NEW YORK UNIVERSITY

New York University is an affirmative action/equal opportunity institution.

